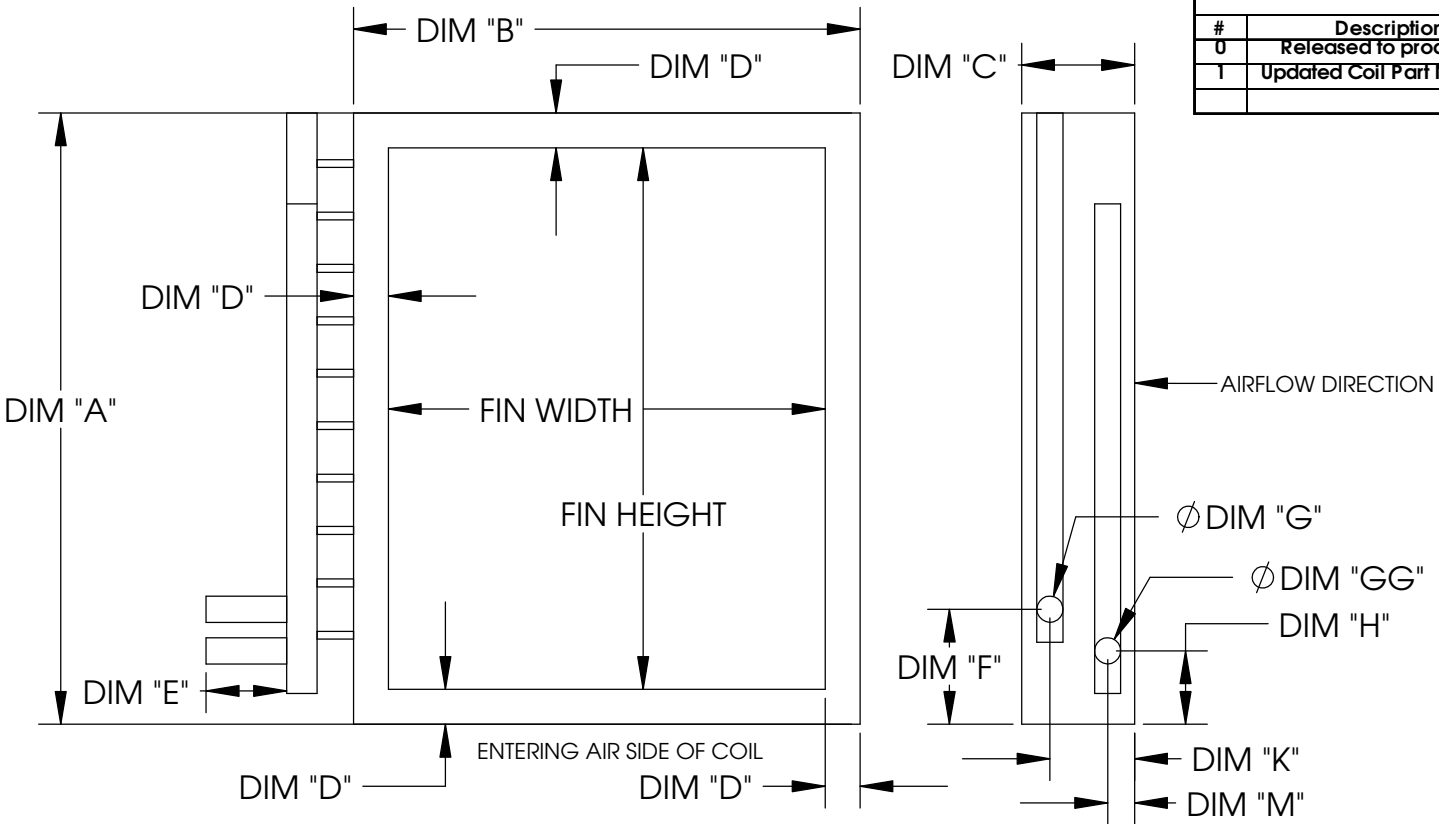


HEATCRAFT
DX COIL
DRAWINGS
2/14/2013

Revision History				
#	Description	Revised by	ECN#	Date
0	Released to production	-----	----	-----
1	Updated Coil Part Numbers	AJK	2588	2/14/13



- Notes:
- 1) Distributor tubing bent toward leaving air side of coil.
 - 2) Liquid connection points vertically upwards.
 - 3) See page 2 for dimensional data.

Material: N/A
 Blank Size: N/A x N/A
 Weight: N/A lbs

Part Number: N/A
 MACOLA Number: N/A
 Drawing Name: DX Coil Dimensions
 Drawn By: WBG
 Parent Assembly: N/A
 Sheet: 2 of 3

Unless Otherwise Specified
 Dimensions are in Inches.
 Standard Tolerances are:
 Fractions: ±1/16
 Decimal: .XX±.05
 .XXX±.015
 Angles: ±1°

CONFIDENTIAL

DX COIL DIMENSIONAL INFORMATION (IN)

Coil Module	FIN HEIGHT	FIN LENGTH	DIM "A"	DIM "B"	DIM "C"	DIM "D"	DIM "E"	DIM "F"	DIM "G"	DIM "GG"	DIM "H"	DIM "K"	DIM "M"	TOTAL TONNAGE	LIQUID SIZE	# OF CIRCUITS	NEW HEATCRAFT #	OLD HEATCRAFT #	Coil AX#
DXM 1-1	31.25	27	34.25	30	6	1.5	6	N/A	1.625	1.625	3.74	N/A	1.7	3	1.125	1	3EZ0802H	5EN0603B	A0004420
DXM 1-2	31.5	27	34.5	30	6	1.5	6	N/A	1.625	1.625	3.74	N/A	1.7	5	1.125	1	4EZ0802H	5EN0903B	A0004421
DXM 1-3	31.5	27	34.5	30	7.5	1.5	6	6.74	1.625	1.625	3.74	4.05	1.8	10	0.875	2	4EZ0903H	5EJ0804B	A0004412
DXM 1-4	31.25	27	34.25	30	7.5	1.5	6	6.74	1.625	1.625	3.74	4.05	1.8	12.5	0.875	2	3EZ1303H	5EJ1304B	A0004419
DXM 2-1	37.5	36	40.5	39	7.5	1.5	6	6.74	1.625	1.625	3.74	4.7	2.45	5	0.875	2	3EZ1201H	5EJ0603B	A0004402
DXM 2-2	37.5	36	40.5	39	7.5	1.5	6	6.74	1.625	1.625	3.74	4.7	2.45	10	0.875	2	4EZ1002H	5EJ0703B	A0004408
DXM 2-3	37.5	36	40.5	39	7.5	1.5	6	6.74	1.625	1.625	3.74	4.7	2.45	15	0.875	2	4EY1002H	5EJ1103B	A0004417
DXM 2-4	37.5	36	40.5	39	7.5	1.5	6	6.74	1.625	1.625	3.74	4.05	1.8	20	0.875	2	4EZ0903C	5EJ0904B	A0004415
DXM 3-1	43.5	42	46.5	45	7.5	1.5	6	6.74	1.625	1.625	3.74	4.7	2.45	10	0.875	2	4EZ0602H	5EJ0603B	A0004403
DXM 3-2	43.5	42	46.5	45	7.5	1.5	6	6.74	1.625	1.625	3.74	4.7	2.45	15	0.875	2	4EZ0902H	5EJ0703B	A0004409
DXM 3-3	43.5	42	46.5	45	7.5	1.5	6	6.74	1.625	1.625	3.74	4.7	2.45	20	0.875	2	4EY1002H	5EJ0903B	A0004413
DXM 3-4	43.75	42	46.75	45	7.5	1.5	6	6.74	1.625	1.625	3.74	4.7	2.45	25	1.125	2	4EY1102C	5EJ1303B	A0004418
DXM 4-1	52.5	48	55.5	51	7.5	1.5	6	6.74	1.625	1.625	3.74	4.7	2.45	20	0.875	2	4EZ1102H	5EJ0603B	A0004404
DXM 4-2	52.5	48	55.5	51	7.5	1.5	6	6.74	1.625	1.625	3.74	4.7	2.45	25	0.875	2	4EY1002H	5EJ0803B	A0004411
DXM 4-3	52.5	48	55.5	51	7.5	1.5	6	6.74	1.625	1.625	3.74	4.7	2.45	30	1.125	2	4EY1102H	5EJ0903B	A0004414
DXM 4-4	52.5	48	55.5	51	7.5	1.5	6	7	2.125	2.125	4	4.05	1.8	40	1.125	2	4EY1002H	5EJ0904B	A0004416
DXM 5-1	55.5	67	58.5	70	7.5	1.5	6	7	2.125	2.125	4	5.2	2.45	30	1.375	2	4EZ1002H	5EJ0603B	A0004405
DXM 5-2	55.5	67	58.5	70	7.5	1.5	6	7	2.125	2.125	4	5.2	2.45	40	1.375	2	4EZ1302H	5EJ0703B	A0004410
DXM 5-3	55.5	67	58.5	70	7.5	1.5	6	6.74	2.125	2.125	3.74	4.05	1.8	50	1.375	2	4EZ1003H	5EJ0604B	A0004406

Material: N/A
Blank Size: N/A x N/A
Weight: N/A lbs

Part Number: N/A
MACOLA Number: N/A
Drawing Name: DX Coil Dimensions
Drawn By: WBG
Parent Assembly: N/A
Sheet: 3 of 3

Unless Otherwise Specified
Dimensions are in Inches.
Standard Tolerances are:
Fractions: ±1/16
Decimal: .XX±.05
.XXX±.015
Angles: ±1°

CONFIDENTIAL